

# Installation Instructions

I - Sheet Number WIN135 Rev.D



## Ventvisor® Deflector

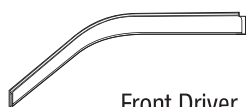
**For proper installation and best possible fit, please read all instructions BEFORE you begin.  
For technical assistance or to obtain missing parts, please call Customer Relations at 1-800-344-8759.**

### Important Safety Information



- CAUTION - Before driving, ensure that the vent visor is properly secured to vehicle.
- Do not use automatic "brush-style" car washes.
- Do not use cleaning solvents of any kind.
- Periodically check all components for tightness.

### Contents - 2 Piece Set **NOTE:** Actual product may vary from illustration.



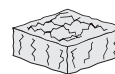
Front Driver  
Side Visor



Front Passenger  
Side Visor



Alcohol Pad x2



Scotch Brite  
Pad

### Contents - 4 Piece Set



Front Driver  
Side Visor



Front Passenger  
Side Visor



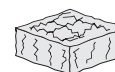
Rear Driver  
Side Visor



Rear Passenger  
Side Visor



Alcohol Pad x4



Scotch Brite  
Pad

### Tools Required



Car Wash Supplies



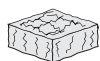
Clean Towel

### Preparation Before Painting / Installation

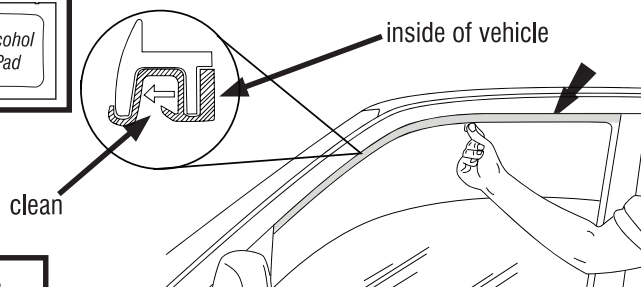
- A trial fit is recommended to ensure proper positioning and fit.
- Check fit of parts before painting as we will not accept the return of modified or painted parts.
- Wash and dry your vehicle to remove any debris and/or dirt from the installation area.
- **Ensure vehicle surface and part are above 60°F (15°C) prior to installation.**



### Installation Steps **NOTE:** Actual application may vary slightly from illustrations.



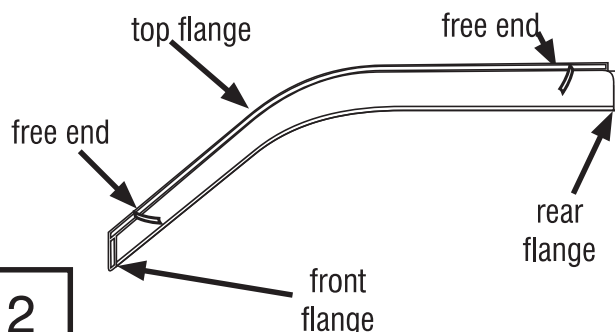
Roll down window. Buff the inside felt surface with scotch brite pad. Then clean with alcohol pad.



1

**NOTE:** visors mount on the **inside** of the window channel.

Remove tape liner from front flange. Peel back 2" of tape liner from each end of top flange.

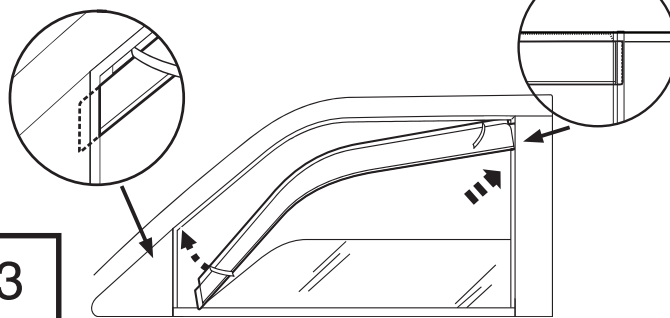


2

## Installation Steps

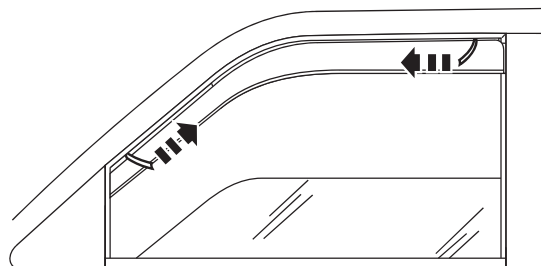
**NOTE:** Actual application may vary slightly from illustrations.

Insert visor into window channel, rear flange first. Insert rear flange between rubber trim and door post. Insert front flange into window channel. The top flange slides into the window channel.



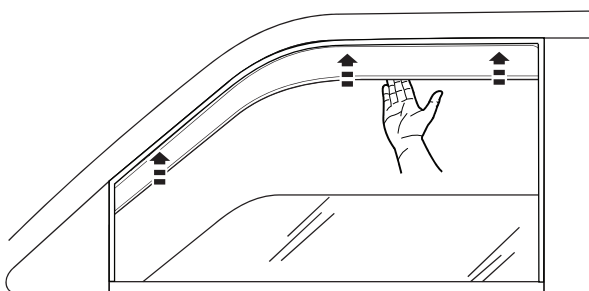
3

Remove tape liner by pulling on free ends.



4

Press the exposed area of tape against the surface and verify position.

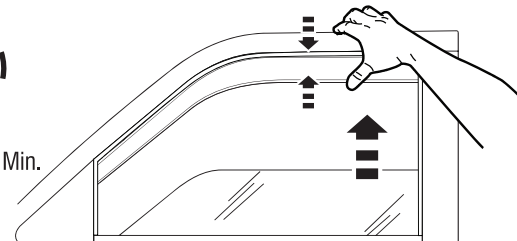


5

Continue to apply pressure to ensure that the visor remains properly seated inside the window channel as window is slowly closed. Leave window up for 72 hours to secure visor to window channel.

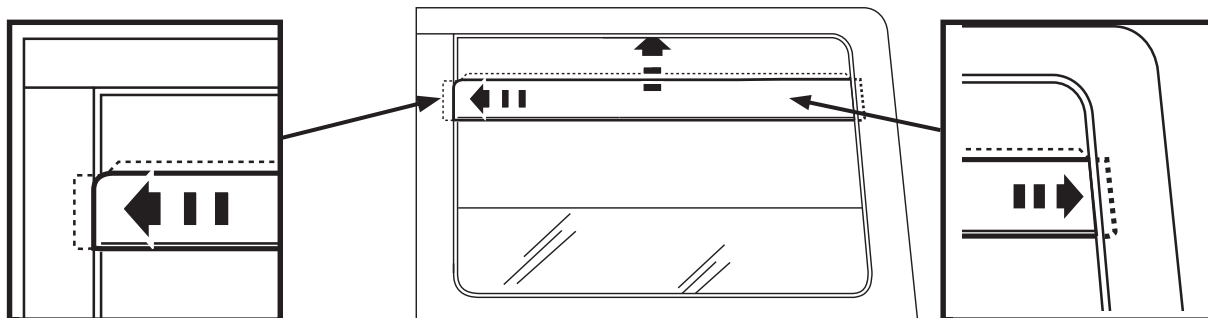


6



## 4 Piece Set

Insert visor into window channel, front flange first. Insert front flange between rubber trim and door post. Insert rear flange into window channel. The top flange slides into the window channel.



7

Repeat steps 1 thru 7 for passenger side

## Care and Cleaning

- Wash only with mild soap & dry with a clean cloth.



The material that your product is made from can be recycled. Please also consider recycling the packaging that your product came in.



## Congratulations!

You have purchased one of the many quality Husky® branded products. We take the utmost pride in our products and want you to enjoy years of satisfaction from your investment. We have made every effort to ensure that your product is top quality in terms of fit, durability, finish and ease of installation.



1-800-344-8759 • Visit us at [huskyliners.com](http://huskyliners.com)

© 2025 Husky Liners, Inc. All rights reserved.

Husky® and the Husky logo are trademarks of Husky Liners, Inc.